

Gorgeous Custom Family Home

with view of Mt. St. Helens



**LEASE
PURCHASE
AVAILABLE**

1612 S Dusky Drive

**One of six custom homes built in
the exclusive Taverner Ridge
planned community**

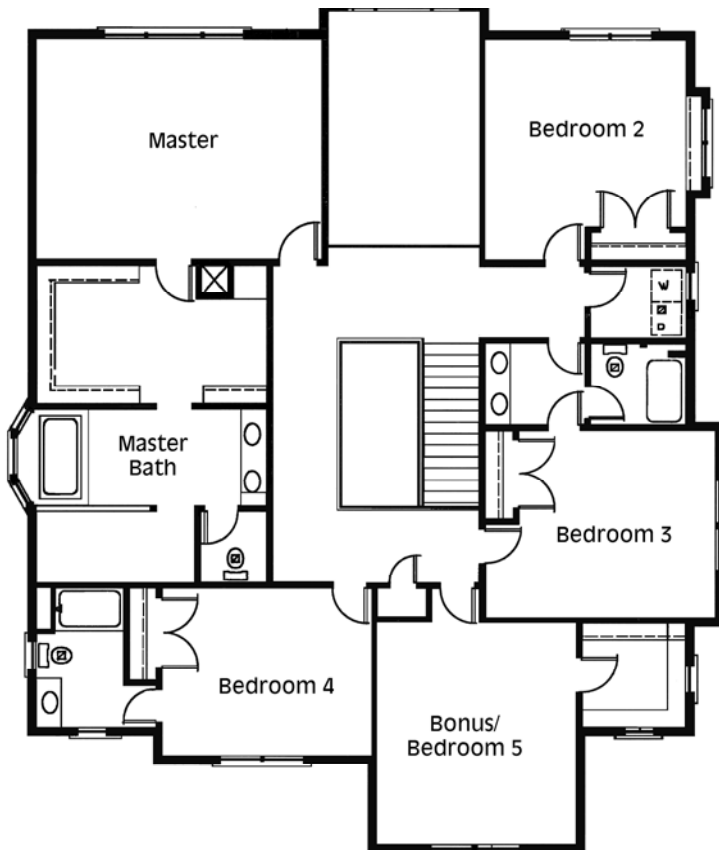
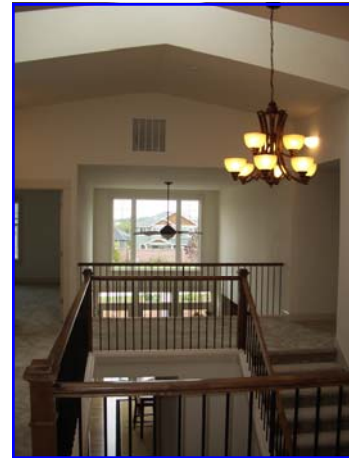
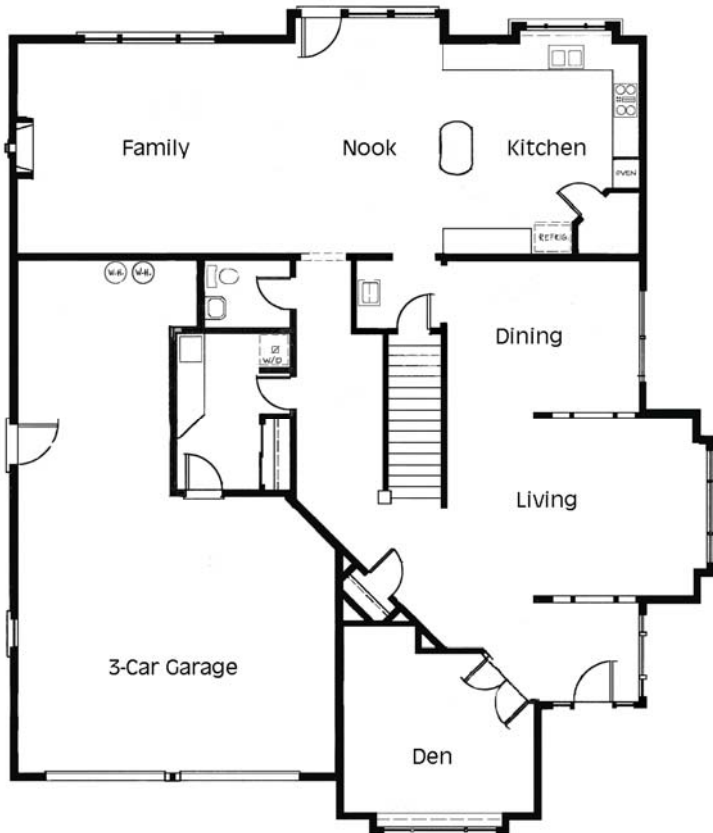
\$519,000

**See this home at
www.TavernerRidge.com**

HOME FEATURES

- 4436 SF of high quality construction
- 6970 SF Lot
- 5 bedrooms
- Gourmet kitchen w/island bar, stainless steel appliances, granite, walnut hardwood floors
- 3 car tandem garage
- Custom cabinets & built-ins thru' out
- Oversized master suite with huge walk in shower & closet
- Laundry rooms on both floors
- Lennox 94.6% high efficient furnace; A/C ready
- Kohle Plumbing Fixtures and Grohe Faucets
- Jacuzzi & Jetted Tubs and Showers
- Central vacuum system ready
- Solid wood doors and hardware
- Milgard windows and exterior trim
- 50 year roof composition roofing
- Prewired for high speed internet & surround sound
- Lennox gas fireplace

For more information or to request a showing, please call 360-887-3560
or email at: Info@TavernerRidge.com



For more information or to request a showing, please call 360-887-3560 or email at: Info@TavernerRidge.com